

ADZ-SMH

0...1000

0...5000

IP65 (. IP69K)

ADZ-SMH

5000

5000



ERC



ADZ-SMH

* p []	1600	2000	2500	4000	5000
p []	2400	2400	3600	4800	6000
p []	3000	3000	4500	6000	7000

	2-	3-	3-	3-	3-
*	4...20	4...20	0...10	1...5	0,5...4,5
U [Vdc]	10...32**	9...30	12...32	8...32	5 ± 10 %
R _A	R = (U _s - 10) / 0,02A . 200 **		4.7	4.7	4.7
t []	2	1	1	1	1
I []	23	40	10	10	7,5
			**		
* U [Vdc]	50	500/710			

	< 2000	> 2000
(+23 °C) %	0,50*** . 0,25	1,00*** . 0,5
% BFSL	0,15	0,30
/ %	0,15***	0,20

T [°C]	-40...125
T [°C]	-40...105
T [°C]	-40...125
**** T [°C]	-20...85
%	0,15 / 10K
%	0,15 / 10K
%	- 40°C 2,00%
%	-105°C 2,00%

17-4 PH,

m []	120-150
g	1000 . DIN EN 60068-2-32
g	20 . DIN EN 60068-2-6

MVS/A



M16x1,5
MVS/A



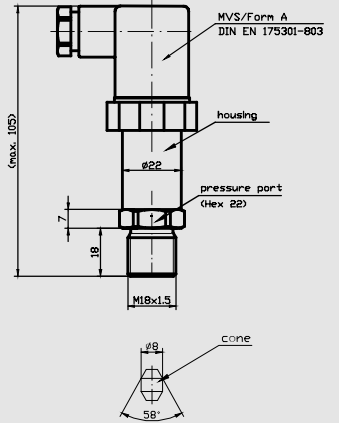
M16x1,5 MVS/C



M18x1,5
MVS/A

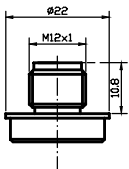


M18x1,5
Packard

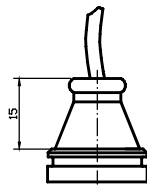


*

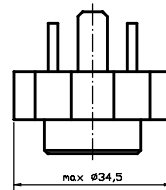
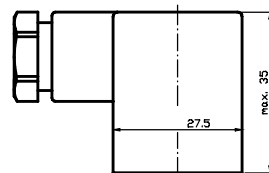
M12x1 (S763)
(IP67)



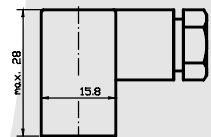
(IP67/IP69K)



MVS/A
DIN EN 175301-803
(IP65)

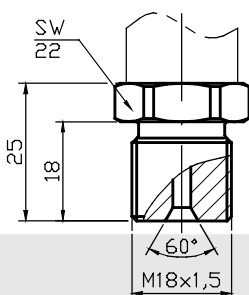


MVS/C
DIN EN 175301-803
(IP65)

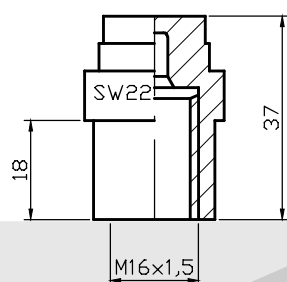


*

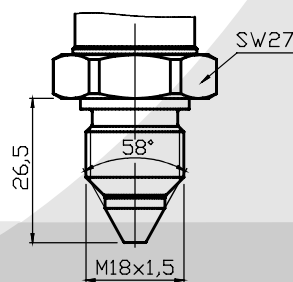
M18x1,5



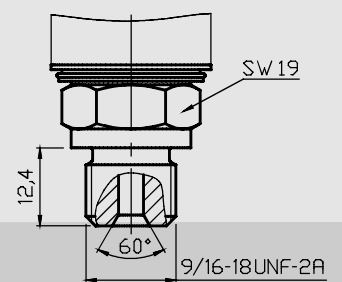
M16x1,5



M18x1,5 / K



9/16-18 UNF-2A / IK 60°



*

ADZ-SMH

16.0 - 4...20 (2 .)	0/1000	BAR: MPA: KPA: KGC: / 2 PSI: psi MWS: . . .	g - a - sr -
10.0 - 4...20 (2 .)	0/1600		
10.1 - 0...20	0/2000		
10.2 - 4...20 (3 .)	0/2500		
10.8 - 0...5	0/3000		
20.0 - 0...10	0/4000		
20.1 - 1...5	0/5000		
20.4 - 0...5			
20.11 - 0,5...5			
20.20 - 0...6			
20.23 - 0...2,5			
37.7 - 0,5...2,0 (.)			
37.0 - 0,5...4,5 (.)			
40.0 - 0,5...4,5 (.)			

10: 1,0%	20: 20 1,5	MVC: MVS/C	R06 -	0,6
05: 0,5%	M16F: M16x1,5	MVA: MVS/A	02C -	
025: 0,25%	M18C: 18 1,5	M12: S763 M12	4 -	
	U98M: 9/16-18 UNF 2A	M16: S723 M16	-	
		MIL: MIL C26482		
		KP1: 1		
		2RMD: 2		
		2RMT: 2		

: ADZ-SMH-10.0 0/2000 BAR G 05 M20 M12

ADZ NAGANO GmbH

“ 2001”
 +7 (495)-921-30-12

, .24, .3, .207

info@all-impex.ru

www.all-impex.ru

Rev. 2020/04/06