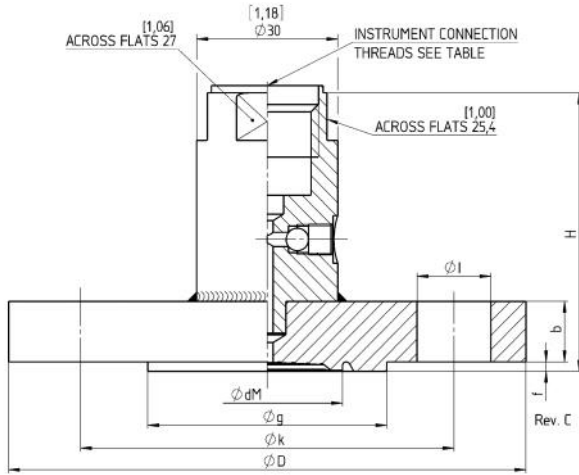


[]

INSTRUMENT CONN. THREADS	CODE
1/4-18 NPT FEMALE	02T
1/2-14 NPT FEMALE	04T
G 1/2 FEMALE; DIN EN 837	51T
G 1/4 FEMALE; DIN EN 837	26T
WELDING PORT	00T



Size DN	PRESSURE CLASSES	Ø D	b	Ø g	Ø dM	f	Ø k	Ø I	H	MIN SPAN	WEIGHT KG
1"	150	[4,33] 110	[0,50] 12,7	[2,00] 50,8	[1,26] 32	[0,08] 2	[3,13] 79,4	[0,63] 15,9 x 4	[2,29] 58,2	6 bar	1,0
	300	[4,92] 125	[0,63] 15,9				[3,50] 88,9	[0,75] 19,1 x 4	[2,42] 61,4		1,5
	400/600	[5,91] 150	[1,13] 28,6				[4,00] 101,6	[1,00] 25,4 x 4	[2,68] 68,0		2,0
	900/1500	[6,30] 160	[1,38] 35,0				[4,25] 108,0	[1,00] 25,4 x 4	[3,11] 79,1		4,0
	2500	[4,92] 125	[0,63] 15,9				[3,87] 98,4	[0,63] 15,9 x 4	[2,42] 61,4		5,0
1 1/2"	150	[6,10] 155	[0,75] 19,1	[2,87] 73,0	[1,73] 44	[0,08] 2	[4,50] 114,3	[0,87] 22,2 x 4	[2,54] 64,6	4 bar	2,0
	300	[6,10] 155	[0,75] 19,1				[4,50] 114,3	[0,87] 22,2 x 4	[2,54] 64,6		3,0
	400/600	[7,09] 180	[1,25] 31,8				[4,87] 123,8	[1,13] 28,6 x 4	[3,24] 82,3		6,0
	900/1500	[8,07] 205	[1,75] 44,5				[5,75] 146,0	[1,25] 31,8 x 4	[3,74] 95,0		10,5
	2500	[5,91] 150	[0,69] 17,5				[4,75] 120,7	[0,75] 19,1 x 4	[2,48] 63,0		2,5
2"	150	[6,50] 165	[0,81] 20,7	[3,63] 92,1	[2,24] 57	[0,08] 2	[5,00] 127,0	[0,75] 19,1 x 8	[2,62] 66,5	1 bar	3,5
	300	[6,50] 165	[0,81] 20,7				[5,00] 127,0	[0,75] 19,1 x 8	[2,62] 66,5		4,5
	400/600	[8,46] 215	[1,50] 38,1				[6,50] 165,1	[1,00] 25,4 x 8	[3,49] 88,6		10,5
	900/1500	[9,25] 235	[2,00] 50,9				[6,75] 171,4	[1,13] 28,6 x 8	[3,99] 101,4		16,0
	2500	[7,48] 190	[0,88] 22,3				[6,00] 152,4	[0,75] 19,1 x 4	[2,67] 67,8		5,5
3"	150	[8,27] 210	[1,06] 27,0	[5,00] 127,0	[3,46] 88	[0,08] 2	[6,63] 168,3	[0,87] 22,2 x 8	[3,25] 82,5	1 bar	7,0
	300	[8,27] 210	[1,06] 27,0				[6,63] 168,3	[0,87] 22,2 x 8	[3,25] 82,5		9,0
	400/600	[9,45] 240	[1,50] 38,1				[7,50] 190,5	[1,00] 25,4 x 8	[3,49] 88,6		13,5
	900	[10,43] 265	[1,88] 47,7				[8,00] 203,2	[1,25] 31,8 x 8	[3,88] 98,5		19,5
	1500	[12,01] 305	[2,63] 66,7				[9,00] 228,6	[1,37] 34,9 x 8	[4,61] 117,2		35,0
4"	150	[9,06] 230	[0,98] 25,0	[6,19] 157,2	[3,46] 88	[0,08] 2	[7,50] 190,5	[0,75] 19,1 x 8	[2,67] 67,8	1 bar	7,5
	300	[9,06] 230	[0,98] 25,0				[7,50] 190,5	[0,75] 19,1 x 8	[2,67] 67,8		12,0
	400	[10,04] 255	[1,19] 30,2				[7,87] 200,0	[0,87] 22,2 x 8	[3,37] 85,5		14,0
	600	[10,83] 275	[1,50] 38,1				[8,50] 215,9	[1,00] 25,4 x 8	[3,49] 88,6		17,5
	900	[11,42] 290	[1,75] 44,5				[9,25] 235,0	[1,25] 31,8 x 8	[3,74] 95,0		27,5
1500	[12,20] 310	[2,13] 54,0	[9,50] 241,3	[1,37] 34,9 x 8	[4,11] 104,5	30,0					
	[13,98] 355	[3,00] 76,2	[10,75] 273,0	[1,63] 41,3 x 8	[4,99] 126,7	56,0					

(10) 1"	(S) 316L (1.4435)	(S) 316L (1.4404)	(00T)	lbs.	(RF) Raised face	(CK) ()	(6B) ()
(15) 1 1/2"	(P) 400		(02T) 1/4 NPT	(150 LBS)	(RTJ) Ring joint face	(DJ) ()	(ATEX) ()
(20) 2"	(U) .. 480 °F, 250 °C		(04T) 1/2 NPT	(300 LBS)		(CF) ()	(DU) ()
(30) 3"	(H) C276		(51T) G 1/2	(600 LBS)		(CF) ()	(NH) ()
(40) 4"	(S-H) 316L (1.4435)		(26T) G 1/4	(900 LBS)		(HA) 800 ()	(C3) EN
	(ECTFE) 300 °F, 150 °C			(1500 LBS)		(GQ) 800 ()	10204 3.1
	(S-TC) 316L (1.4435)			(2500 LBS)		(GQ) FDA ()	(CD5) NACE - MR 01-75/ISO
	(PTFE) 300 °F, 150 °C					(GQ) FDA ()	15156
	(W) ()					(GQ) FDA ()	(MQ) PMI-
						(GQ) FDA ()	(1115A) ()
						(GQ) FDA ()	(1115P) ()
						(GQ) FDA ()	1) ()
						(GQ) FDA ()	1) ()
						(GQ) FDA ()	1115

20 DF ASME H S 04T 300 LBS RF CK C3