

# ADZ-SMX2

0 10 , -1 2000  
4...20

-40 85  
IP65 ( . IP69K)

0: II 1G Ex ia IIB T4 Ga II 1G Ex ia IIC T4 Ga  
1: II 2G Ex ia IIC T4 Gb

: 012/2011,



ADZ-SMX2

IBExU 10 ATEX 1014.

0 1

0: ,  
,  
1: ,  
,



# ADZ-SMX2

* p [ ]	10	16	20	25	40	60	100	
p [ ]	50	80	100	125	200	120	200	
p [ ]	100	160	200	250	400	180	300	
* p [ ]	160	200	250	400	600			
p [ ]	360	400	500	800	1200			
p [ ]	480	600	750	1200	1800			
* p [ ]	1,0	1,6	2,5	4,0	6,0	10,0	16,0	25,0
p [ ]	6	6	6	10	20	20	40	100
p [ ]	9	9	9	15	30	30	60	250
* p [ ]	40	60	100	160	250	400	600	1000/2000
p [ ]	100	200	200	400	750	750	840	1200/2400
p [ ]	150	300	300	600	1000	1000	1050	1500/3000

	2-	0	1
* U [Vdc]	4...20	II 1G Ex ia IIB T4 Ga	II 2G Ex ia IIC T4 Gb
R	$R = (U_s - 10) / 0,02A$	27 , 125 , 0,85	27 , 125 , 0,85
t [ ]	1 ( ) 4 ( )	T4 (-20...60C)	T4 (-40...85C)
I [ ]	23		

\* U [Vdc] 500

(+23 °) %	1 2000	10 600
BFSL	0,50*** ≤ 0,25	1,00*** ≤ 0,5
/ %	0,15	0,15

T [°C]	0	1	
T [°C]	-20...60	-40...100	
T [°C]	-20...60	-40...85	
T [°C]	-40...120	-40...120	
**** T [°C]	-20...60	-20...85	
%	0,15 / 10K	0,15 / 10K	
%	0,15 / 10K	0,15 / 10K	
%	- 20°C 1,00%	- 40°C 1,00%	- 40°C 1,00%
%	-60°C 1,00%	- 85°C 1,00%	- 85°C 2,00%

17-4 PH,



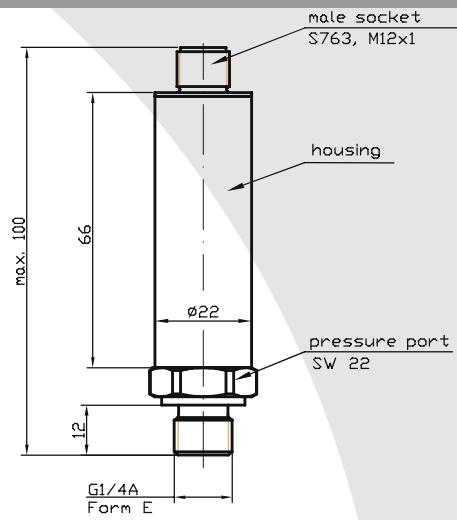
m [ ]	150
g	1000
g	20
g	50

DIN EN 60068-2-32  
DIN EN 60068-2-6  
DIN EN 60068-2-27  
012/2011, ATEX IBExU10ATEX1014

S763 (M12x1)



S763



\*

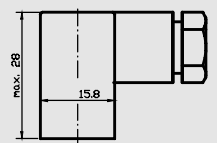
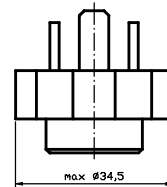
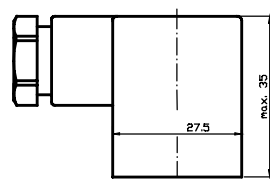
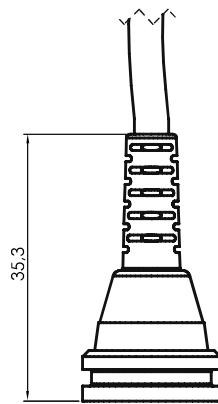
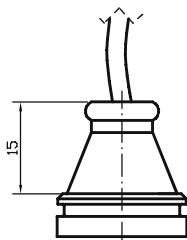
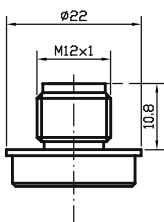
M12x1 (S763)  
(IP67)

(IP67/IP69K)

(IP67/IP69K)

MVS/A  
DIN EN 175301-803  
(IP65)

MVS/C  
DIN EN 175301-803  
(IP65)



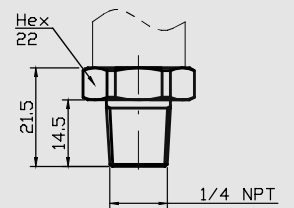
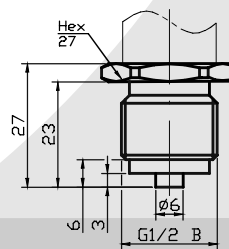
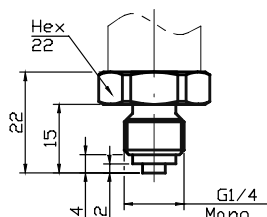
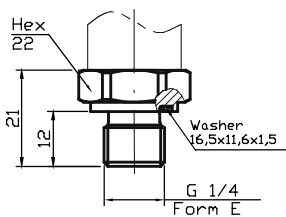
\*

G 1/4" A;

G 1/4" B

G 1/2" B

1/4 " NPT



\*

## ADZ-SMX2

10.0 - 4...20 (2 .)	-1/0	0/16	BAR:	g -
	-1/1	0/20	MPA:	a -
	-1/5	0/40	KPA:	sr -
	0/1	0/60	KGC: / 2	
	0/1,6	0/100	PSI: psi	
	0/2	0/160	MWS: . . .	
	0/2,5	0/200		
	0/4	0/250		
	0/6	0/400		
	0/10	0/600		
		0/1000		
		0/1600		
		0/2000		

10: 1,0%	20: 20 1,5	G18A: G 1/8 A	MVC: MVS/C	R06 - 0,6
05: 0,5%	12 : 12 1 L=24	G14A: G 1/4 A	MVA: MVS/A	02C -
025: 0,25%	M12E: 12 1	G14B: G1/4 B	M12: S763 M12	4 -
	M12S: M12x1,5	G12B: G1/2 B	M16: S723 M16	-
	M14A: M14x1,5	G12E: G1/2 E	MIL: MIL C26482	
	M14E: M14x1,5	18NP: 1/8 NPT	KP1: 1	
	M16F: M16x1,5	14NP: 1/4 NPT	2RMD: 2	Z0 - 0
	M18: M18x1,5	U98M: 9/16-18 UNF 2A	2RMT: 2	
	M18F: M18x1,5	M8A: M8x1		
	M18C: 18 1,5	M12: M12x1,25		
	M16A: M16x1,5			

: ADZ-SML-37.0 0/10 BAR G 05 M20 M12

ADZ NAGANO GmbH

“ 2001”  
 ., .24, .3, .207  
 +7 (495)-921-30-12, +7 (495)-646-20-92

info@all-impex.ru

www.all-impex.ru